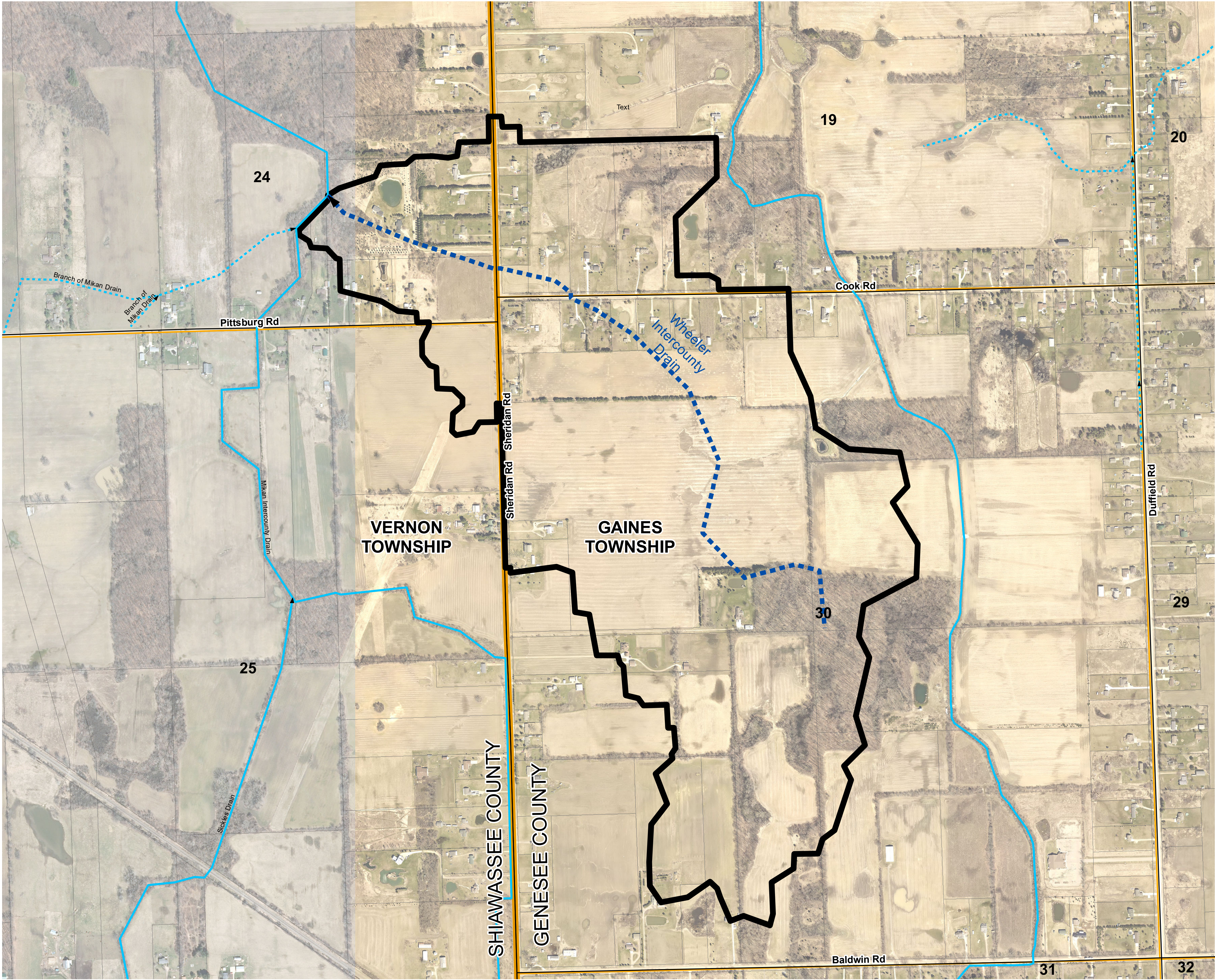




**DRAINAGE DISTRICT MAP OF
WHEELER INTERCOUNTY DRAIN**
GAINES TOWNSHIP, GENESEE COUNTY, MICHIGAN
VERNON TOWNSHIP, SHIAWASSEE COUNTY, MICHIGAN

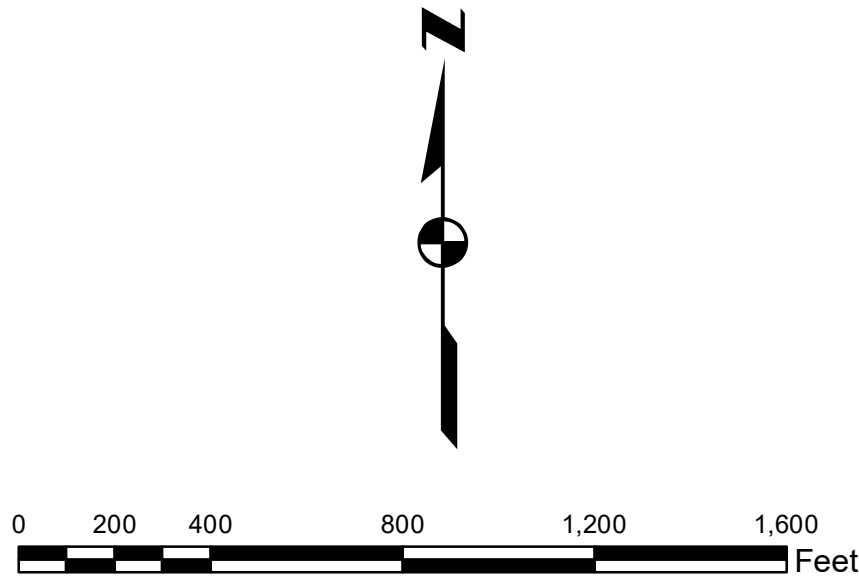


Document Path: D:\County GIS\Genessee-Shiawassee Intercounty\Wheeler IC DD Map_20230407.mxd

Legend

TYPE

- OPEN DRAIN
- TILE DRAIN
- OPEN DRAIN
- TILE DRAIN
- NATURAL WATERCOURSE
- STATE ROADS
- COUNTY ROADS
- CITY/VILLAGE STREETS
- DRAINAGE DISTRICT BOUNDARY
- COUNTY LINE
- TOWNSHIP LINES
- PARCEL LINES



COUNTY ACREAGE BREAKDOWN:

GENESEE COUNTY:	283.3 AC - 86.4%
SHIAWASSEE COUNTY:	44.6 AC - 13.6%
TOTAL:	327.9 AC - 100%

APPROXIMATE COUNTY PARCEL BREAKDOWN:

GENESEE COUNTY:	39 PARCELS
SHIAWASSEE COUNTY:	4 PARCELS
TOTAL:	43 PARCELS

DRAIN DATA

OPEN DRAIN:	0.0 FT
ENCLOSED DRAIN:	6,023.8.0 FT
TOTAL LENGTH:	6,023.8.0 FT 1.14 MILES

NOTE:
DRAIN LENGTH BASED ON THE
TOTAL LENGTH OF DRAIN AS
PROPOSED ON THIS MAP.



CAUTION!!
THE LOCATIONS AND ELEVATIONS OF EXISTING UNDERGROUND UTILITIES AS SHOWN ON THIS DRAWING ARE ONLY APPROXIMATE. NO GUARANTEE IS EITHER EXPRESSED OR IMPLIED AS TO THE COMPLETENESS OR ACCURACY THEREOF. THE CONTRACTOR SHALL BE EXCLUSIVELY RESPONSIBLE FOR DETERMINING THE EXACT UTILITY LOCATIONS AND ELEVATIONS PRIOR TO THE START OF CONSTRUCTION.

CLIENT
**MICHIGAN DEPT.
OF AGRICULTURE &
RURAL DEVELOPMENT**

PROJECT TITLE
**WHEELER
INTERCOUNTY DRAIN**
GENESEE & SHIAWASSEE COUNTIES

REVISIONS	
For Web Map	5/19/23
Record Drawing	9/5/23

ORIGINAL ISSUE DATE
APRIL 7, 2023

DRAWING TITLE
**DRAINAGE
DISTRICT MAP**

PEA JOB NO.	22-1145.00
P.M.	RAH
DN.	RAH
DES.	RAH

DRAWING NUMBER: